



Walters State Community College Course Syllabus

Course Information

Course Number and Name: ART 1035 Introduction to Art

Section ID: 80930.202380

Semester and Year: Fall 2023

Credit Hours: 3

Start Date: August 21, 2023

End Date: December 08, 2023

Course Format: WEB - Web Classes

Catalog Course Description: Experiencing art - form, meaning, and history in visual arts. Lecture-discussion. Especially for non-majors. F, S, Su. (T)

General Education Course Designation: General Education Course

Meeting Details: TBD

Course Drop Deadline: October 27, 2023

Instructor Information

Name: Laura Osteen

Office Location: CCEN 205

Office Hours: Posted on Elearn in the Content Section

Office Phone: 423-585-2632

Email: Laura.Osteen@ws.edu

Supervisor Name: Amy Evans

Supervisor Phone: 423-318-2574

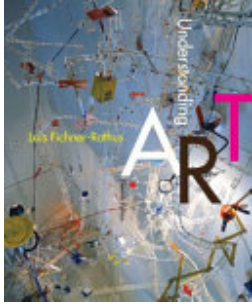
Secretary Name: Debbie Wilson

Secretary Phone: 423-585-6947

Required Textbook(s) and Materials

Understanding Art

Authors: Lois Fichner-Rathus



Publisher: Cengage Learning

Edition: 11th

Additional Information

The textbook is required for the course. Through your DEI fee, you are automatically provided the textbook as an ebook. Refer to the instructions on eLearn in the Getting Started module to access your ebook. You have until September 8th to opt out of this option, but if you choose to do so, you must find alternative access to the text.

Digital Camera

Additional Information

The one on your phone is sufficient.

Access to Microsoft Word

Additional Information

- All students have access to the entire Microsoft Office suite. Follow the instructions [here](#) to install.

Student Learning Outcomes/Objectives

- Upon successful completion of this course, the student will be able:
 1. To develop basic vocabulary in aesthetics.
 2. To increase the student's ability to use appropriate terminology when engaging in critical analysis of visual images
 3. To assess the impact of visual images on contemporary (selected representative) and past societies.
 4. To identify subject areas and their iconographical meaning and impacts.
 5. To construct understanding of technical procedures used in manipulation of standard art media.
 6. To develop visual senses.
 7. To explore rhythm, balance, emphasis, variety, unity, and proportion as standard artistic means of expression.
 8. To learn strategies of two-dimensional plane designs that integrate line, shape, form, color, value, texture.
 9. To instill the values of roles in the art world through gallery and museum visits.

10. To relate the effects of censorship.

Instructional Approach and Methods

In online courses, your regular participation is the equivalent of coming to a class held on campus. The most important first step towards active learning in this class is to regularly log into our course, and read posted news items and emails. Communication is key in any learning environment.

The course is broken into a series of Units - one for each section of our course. On the day of the new Unit, a news item is posted with some information about the Unit's assignments, along with the due dates of the Unit. Each Unit also begins with an overview, which details which chapters you should read in your textbook, which videos you should watch, along with any other preparatory materials.

Much of the learning done in this class is through activity. While there are terms to memorize, much of the work in this class is designed to hone your skills of active looking, and critical response. This can only be done by engaging in the assigned work. These assignments are a mixture of quizzes, exercises, online discussions, and online activities. Discussions are of particular importance, as these will contribute to both your learning and that of your peers.

While this is an online course, I am very much an active teacher - you are very rarely being graded by a computer. With the exception of the multiple choice portion of quizzes, I personally grade and review each assignment you turn in. You will be graded following a clear rubric, and will receive written feedback as well. You are encouraged to ask questions when you have them, either through email, scheduling a virtual meeting with me, or coming by my in-person office hours.

If you are not familiar with eLearn, please contact me immediately. It is essential that you can navigate the eLearn site for this course.

Assessment, Evaluation and Testing Procedures

SUBMISSION TYPE AND GUIDELINES

Details on each Assignment type are listed in the "Assignments" section of this syllabus.

Assignments for this class are all submitted via eLearn, with rare exception.

The Dropbox *should* not lock or close, but there are due dates. Refer to assignment descriptions for late policies. If for any reason you cannot submit, contact me or IT asap.

Discussion sessions are submitted via the eLearn discussion board. You must post first in order to respond to peers.

Quizzes are taken through the eLearn quiz section. Quizzes are timed and cannot be re-started once begun. Make sure you have adequate time to finish once you begin these assignments. You will not have the opportunity to stop and start. Make sure you save and submit your quizzes and exams. After this grace period, you will be able to review your quiz to determine which answers you missed.

EVALUATION GUIDELINES

Each assignment is paired with a rubric used for grading. Every attempt is made to return feedback quickly and thoroughly. You may always email, schedule a meeting virtually, or come to in-person office hours to discuss your progress further.

I look for good grammar, critical thinking, and understanding of the material (among other things). Should you be curious about the rubrics of individual assignments, they can be found on elearn.

GENERATIVE ARTIFICIAL INTELLIGENCE GUIDELINES

All assignments are built with the intent to increase your own perception of art and artistic vocabulary. The use of generative AI in assignments does not allow you to expand your critical thinking and observational skills. While AI has practical applications, it cannot replicate your unique thoughts, experiences, or point of view, which is paramount to your development in this course.

AI will not be permitted in this course on any assignment, including quizzes, discussion posts, dropbox activities, or the Art Analysis Paper. Any assignment that is found to have been plagiarized or to have used unauthorized AI tools may receive a zero and/or be reported for academic misconduct. Unauthorized AI tools includes any artificial intelligence-based technologies such as ChatGPT, Google's Bard, or any other pre-trained language model (commonly referred to as a "chatbot"), or paraphrasing technology ("Spinbots"). *Please be aware that Grammarly uses AI tools and may register as having used AI by the tools listed below. If you plan to use an editing software such as Grammarly that uses AI, you must include both the unedited and edited versions of the assignments. The use of editing AI may not be used in discussions or discussion posts.* When in doubt, if you are concerned that your use of AI may constitute plagiarism, please reach out to me for approval of the use or rejection of the use before submitting your work.

Regardless of AI usage, all assignments must be written in whole by your own words.

The instructor will contact the student regarding any suspected use of AI before assigning a grade. The student will have the right and responsibility to demonstrate the originality of their work through an individual conference with the instructor.

The instructor may use the following to investigate suspected use of AI, along with their own professional judgment:

- a. Turnitin Software for plagiarism and AI writing detection.
- b. at least 3 web-based AI detection tools
- c. inconsistencies in vocabulary or syntax
- d. inconsistencies with sources or citation

It is the student's responsibility to save and document any sources, research, drafts, or preliminary activities associated with each assignment. Based on the individual conference, the instructor will determine a course of action, and grade assigned.

Grading Scale

A	(90% – 100%) Exemplary performance: enthusiastic participation in discussions, demonstration of a comprehensive understanding of the subject, organized and insightful presentation and/or writing.
B	(80% – 89%) Very good performance: very good participation in discussions, demonstration of a comprehensive understanding of the subject, organized and thoughtful presentation and/or writing.
C	(70% – 79%) Good performance: good participation in discussions, demonstration of understanding of the subject, thoughtful presentation and/or writing.
D	(60% – 69%) Below average performance: some participation in discussions, some demonstration of understanding of the subject, brief or unorganized presentation and/or writing.
F	(<59%) Poor performance: little or no participation in discussions, little demonstration of understanding of the subject, brief and unorganized presentation and/or writing.

Assignments

Your grade is determined by a point based system.

We will start with an introductory discussion as well as reading the syllabus dropbox exercise (50pts each)

There are a total of 19 quizzes covering readings and video assignments. You may take these quizzes as many times as you would like to check your understanding of the material. The quizzes are worth 25 points each for a total of 475 pts.

There are a total of 6 discussion questions over unit reading materials worth 100pts each (600 pts total.)

500 points will consist of ten Creative Seeing assignments. There are 2 Creative Seeing assignments in each of the five units for this course. Each assignment is worth 50 points.

350 points of your grade will come from an Art Analysis Paper. You will turn in an outline for this paper at the end of Unit #2 (100pts), the final copy of the Art Analysis paper will be due at the end of Unit #4 (200pts.)

Each Unit will have a timed exam over the chapter readings and videos included in the unit. There are a total of 5 Unit Exams worth 100pts each (total of 500pts.)

A total of 2525pts.

Class Participation

ATTENDANCE AND PARTICIPATION

The college requires that your attendance is reported. For these purposes, you will not be reported as "attending" the course until you have completed all the introductory assignments posted in the "Getting Started" module, found in the "Content" section of eLearn.

Your continued attendance will be measured by your completion of assignments. Should you not complete the course; your last date of attendance will be recorded as the due date of the last assignment you complete.

ATTITUDE

This course will be conducted in an atmosphere of mutual respect and affirms people of all gender expressions and identities. I am happy to be addressed as either Laura or Mrs. Osteen; my gender pronouns are she/her/hers but using they/them is also fine. I was provided with a class roster with

your name as it appears in the Banner system. However, if you prefer to be called a different name than what is on the roster, please let me know. As I cannot change your name in the eLearn system, please include your preferred name in any assignment or communication, to ensure your peers and I may address you correctly.

We will be viewing a large variety of works. You are not expected to like everything to which you are exposed, but you are expected to consider and be respectful of these works. Some images are potentially provocative and/or offensive. I expect you to view all images with sensitivity and an open mind, in order to understand and evaluate both formal and conceptual qualities. One of the greatest gifts of art is a window into the mind of others, and a chance to spark discussion. Be open to new viewpoints, backgrounds, and motivations as you move through this course.

Course and Class Policies/Procedures

GENERAL LATE POLICIES

In general, every effort should be made to turn in work on time. However, I would always rather you engage in the assigned work, and it be a bit late than not do it at all. The following assignments may be turned in late, with the given provisions:

Quizzes

Quizzes may be submitted up to three days past the due date, but will have 10% deducted from the quiz grade, meaning a late quiz can achieve a maximum of a 90% grade.

Dropbox worksheets

Dropbox worksheets submitted after the due date, but within three days of the due date, will have 10% deducted from the grade. Dropbox worksheets submitted between 3-7 days late will have 20% deducted from the grade.

Discussion sessions

Initial posts and responses are due on Mondays by 11:30pm, but may be posted along with responses by lock deadline (the following Tuesdays at 11:30pm), for a 10% reduction in grade. No posts or responses can be made after the following Sunday lock deadline.

Art Analysis Paper

You will turn in an out line for this paper at the end of Unit #2 and a final draft copy at the end of Unit #4.

They must be easily identifiable as a draft and as a final copy. You can turn in the final version at any time after the draft has been submitted.

Unless otherwise stated, *all weekly assignments are due by Monday evenings at 11:30PM EST.* When in doubt about a due date always check the dropbox date and time.

EXTENUATING CIRCUMSTANCES

If something prohibits you from completing your work on time, please let me know, and I will make my best attempt to work with you. Such cases may be: illness/hospitalization of yourself, or a person for whom you are the primary caregiver, death of a close relative or friend, pregnancy complications or labor and delivery, loss of care support for a person for whom you are the primary caregiver, or other unexpected life circumstances. Whenever possible, please communicate these events as soon as possible and before missed deadlines to make plans to move forward in the class successfully. Missing more than two weeks of work will severely impact your ability to succeed in the course, regardless of any given extensions.

TECHNICAL ISSUES

Technical problems should be reported to the instructor and well documented with a screen shot attached. Extensions based on technical problems will be given rarely, on a case-by-case basis.

Waiting until the last minute, or poor internet connections are not legitimate reasons for extensions.

Academic Honesty

Faculty expect all students to refrain from acts of academic misconduct including but not limited to:

1. Plagiarism - refers to using another person's ideas or writing without giving proper credit to the original source. Indulging in this type of conduct will subject the student to disciplinary sanctions, which may be imposed through the regular institutional procedures of Walters State Community College as outlined in the Student Handbook. Plagiarism will result in a grade of "0" for the paper/exam/presentation. Student Conduct and Disciplinary Sanctions contained in the college Catalog/Student Handbook apply (see policy 04:18:02 Disciplinary Sanctions).

Plagiarism includes, but is not limited to the following:

- a. Using cut/paste tool from original document with no references given.
- b. Copying another student's work and submitting it as one's own.

- c. Forging or otherwise altering signatures.
 - d. Giving or falsifying academic documents or materials.
2. Cheating - construed as attempting to deceive or mislead which includes, but is not limited to the following:
- a. Utilizing old tests, projects, notes or written papers.
 - b. Providing unauthorized information to a fellow student about exam content.
 - c. Receiving unauthorized aid from any source with quizzes, examinations, or other assignments.
 - d. Seeking information in an unacceptable manner during/preceding an exam or other assigned work (cheat sheet, verbal exchange, looking at another person's paper or electronic device, utilizing headphones, using textbook when the test/quiz is not an open book test/quiz, using textbook test bank etc.).
 - e. Consulting with a classmate or others when taking a computerized test.
 - f. Disregarding other specific policies and procedures outlined for a particular class.
 - g. Utilizing unapproved technology/electronic equipment during testing (i.e.: mobile devices such as cell phones, smart devices, or tablets, etc.).
 - h. Using the same Internet Protocol network address (IP address) as another student for testing without approval from the course faculty.
3. The use of any generative artificial intelligence (AI) tool, such as OpenAI's ChatGPT, Google's Bard, or any other pre-trained language model (commonly referred to as "chatbot"), must be cited for any assignment where it has been used and may not be used unless specifically allowed by your instructor. Please see your instructor or the course policies within the syllabus if you have questions.

Student Resources

TUTORING SERVICES

Students in need of tutoring assistance are encouraged to contact the Office of Student Tutoring located as follows:

- Morristown Campus - Student Services Building Room L107 - (423) 585-6920
- Niswonger Campus - GRNV 226 - (423) 798-7982
- Sevierville Campus - MMH Room 210 - (865) 286-2787
- Claiborne Campus - Room 123A - (423) 851-4761

Specific tutoring assistance in mathematics and writing is available in-person and online as follows:

- Morristown Campus - English Learning Lab - HUM 120 - (423) 585-6970

[Walters State English Learning Lab \(opens in new window\)](#)
ws.edu/academics/humanities/writing-lab

- Morristown Campus - Mathematics Lab - MBSS 222 - (423) 585-6872

[Walters State Mathematics Learning Lab \(opens in new window\)](#)
ws.edu/academics/mathematics/learning-lab

TECHNOLOGY SUPPORT

Students who need assistance with computing and technology issues should contact the IET Helpdesk by phone at Morristown: (423) 318-2742; Niswonger: (423) 798-8186; or Sevierville: (865) 286-2789 or on-line access.

[Walters State Helpdesk \(opens in new window\)](#)
helpdesk.ws.edu

STUDENTS WITH DISABILITIES SUPPORT SERVICES

Students with disabilities must register with Student Support Services each semester in the Student Services Building, Room U134 (phone (423) 585-6892) if they need any special facilities, services, or consideration.

[Walters State Student Support Services \(opens in new window\)](#)
ws.edu/student-services/disability/

SUICIDE PREVENTION STATEMENT

Walters State is committed to and cares about all students. Support services are available for any person at Walters State who is experiencing feelings of being overwhelmed, hopelessness, depression, thinking about dying by suicide, or is otherwise in need of assistance. For immediate help, contact the National Suicide Prevention Lifeline by calling or texting 9-8-8 or the Trevor Lifeline at 1-866-488-7386. Veterans may also contact the Veterans Crisis Line at 1-800-273-8255 (press 1) or Text 838255.

Walters State has a relationship in place with the following community agencies to provide services (may include crisis referral services, prevention screenings, etc.):

- Cherokee Health Systems 423-586-5032
- Frontier Health 423-467-3600

Meeting Basic Needs and Getting Emotional Support

BASIC NEEDS

Any student who has difficulty affording groceries or accessing sufficient food to eat every day, or who lacks a safe and stable place to live is urged to contact Student Services. If you feel comfortable bringing these needs to my attention, I will also help direct you to the appropriate services on campus.

You can also contact Sherry Watson (423-585-2691) sherry.watson@ws.edu or Tammy Holt (423-585-6864) tammy.holt@ws.edu directly who can help you apply for and receive emergency funds.

COUNSELING SERVICES

Counseling Services are also available to all Walters State students. If you could use someone to talk to, or someone who may be able to better address any of your personal or academic concerns, use one of the following links to schedule an appointment with one of the counselors.

<https://ws.edu/student-services/counseling-testing/>

CRISIS

If you are in crisis, please call one of the following services, or call 911.

<https://www.tn.gov/behavioral-health/need-help.html>

College Policies

STUDENTS HANDBOOK AS OFFICIAL GOVERNING DOCUMENT

This class is governed by the policies and procedures stated in the current Walters State Community College Student Handbook. All students attending Walters State Community College, regardless of the time, location, or format of the class, must abide by the rules and regulations outlined in the current Walters State Catalog/Student Handbook and the current Walters State Timetable of Classes.

[Walters State Catalog \(opens in new window\)](https://catalog.ws.edu/)
catalog.ws.edu/

[Walters State Timetable of Classes \(opens in new window\)](https://ws.edu/admissions/registration/)
ws.edu/admissions/registration/

PURPOSE, LIMITATIONS AND MODIFICATION OF SYLLABUS

This syllabus sets forth the expectations for the course content, work, and grading as well as expectations for student performance and conduct. The syllabus does not constitute a contract between the student and the instructor or the College. The information contained here is subject to change at any time. The instructor reserves the right to modify this syllabus at any time with written notification to the students. Though changes are possible, it is expected that the course will be conducted as described in this syllabus for the semester/year specified in the Course Information section of the syllabus. This syllabus is only valid for the semester/year specified and course requirements are not guaranteed for future semesters.

COURSE GROUND RULES

- Students must attend the first day of on-ground class or contact the instructor prior to the first class. Failure to do this may result in being dropped from the class. Excessive absences may substantially lower the course grade.
- Regular class attendance is a student's obligation for any course regardless of format. (See the Walters State Catalog/Student Handbook). If a student misses class, it is his or her responsibility to contact the instructor regarding missed assignments and/or activities and to be prepared for the next class assignment.
- Students enrolled in web courses must follow the course attendance policy defined for online attendance during the first week of class and throughout the term. Failure to do this may result in being dropped from the class during week one OR may result in the accrual of absences which may negatively impact the student's grade in the course.
- Students who have not paid fees on time and/or are not correctly registered for this class and whose names do not appear on official class rolls generated by the Walters State student information system (MyWS) will not be allowed to remain in class or receive credit for this course.
- Electronic devices must not disrupt the instructional process or college-sponsored academic activity. Use of electronic devices is prohibited unless use of the device is relevant to the activity and use is sanctioned by the faculty member in charge. Electronic devices that are not relevant to the activity or sanctioned by the faculty member in charge should be set so that they will not produce an audible sound during classroom instruction or other college-sponsored academic activity.

FINANCIAL AID

Students receiving any type of financial aid or scholarship should contact the Financial Aid Office before making any changes to their schedule. Schedule changes without prior approval may result in loss of award for the current term and future terms.

All forms of student Financial Aid may be jeopardized or lost due to the lack of Satisfactory Academic Progress in one or multiple courses. Lack of Satisfactory Academic Progress may negatively impact a student's degree/certificate completion pace and further jeopardize Financial Aid eligibility.

CANCELLATION OF CLASSES AND ACADEMIC CONTINUITY

For information related to the cancellation of classes due to inclement weather or other events, please check the Senators Emergency Text system or the college's Web site at:

[Walters State Homepage \(opens in new window\)](#)

ws.edu/home/

[Walters State Facebook page \(opens in new window\)](#)

<https://www.facebook.com/WaltersState/>

[Walters State Twitter page \(opens in new window\)](#)

<https://twitter.com/waltersstate>

or call the college's student information line, 1-800-225-4770, option 1; the Sevier County Campus, (865) 774-5800, option 7; the Niswonger Campus (423) 798-7940, option 7; or the Claiborne County Campus, 423-636-6200, option 7. Also, please monitor local TV and radio stations for further announcements.

When an event or disaster interrupts the scheduled operations of the college and the ability to proceed with the academic course activities as planned, the college and your instructor may alter the course plan outlined in the syllabus. Should an event occur, students should refer to their course e-Learn pages and/or class materials previously delivered to receive guidance from their instructor. Students should continue to monitor the official college channels of communication listed in the above paragraph. If you would like to sign up for the Senators Emergency Text system, please go to the following Web site:

[Senator Emergency Text System \(opens in new window\)](#)

ws.edu/set/

Dual Enrollment students attending on a high school campus should refer to the high school inclement weather cancellations.

LEARNING MANAGEMENT SYSTEM

Brightspace (commonly known as eLearn or D2L) is the college's Learning Management System (LMS).

Brightspace is committed to accessibility by "deliver[ing] a learning experience that meets the needs of all people, regardless of age or ability." [Brightspace Accessibility Standard \(opens in new window\)](#)

Brightspace is also committed to guarding student data and privacy. [Brightspace Privacy Policy](#) ([opens in new window](#)).