



## Walters State Community College Course Syllabus

### Course Information

**Course Number and Name:** ART 2020 Art History Survey II

**Section ID:** 80942.202380

**Semester and Year:** Fall 2023

**Credit Hours:** 3

**Start Date:** August 21, 2023

**End Date:** December 08, 2023

**Course Format:** CON - Conventional Methodology

**Catalog Course Description:** Western Art II. Survey of major developments in Western Art, with an emphasis on the art of Europe and America from 1400 to the early 20th century **F,S**

**General Education Course Designation:** General Education Course

**Meeting Details:** TR; 11:10AM - 12:35PM; HUM 136

**Course Drop Deadline:** October 27, 2023

### Instructor Information

**Name:** Jessie VanderLaan-Delaney

**Role:** Associate Professor of Art and Assistant Dean of Humanities

**Office Location:** HUM 148A

**Office Hours:** See Office Hours below

**Office Phone:** 423-318-2748

**Email:** jessie.vanderlaan@ws.edu

**Supervisor Name:** Amy Evans

**Supervisor Phone:** 423-318-2574

**Secretary Name:** Debbie Wilson

**Secretary Phone:** 423-585-6947

### Office Hours

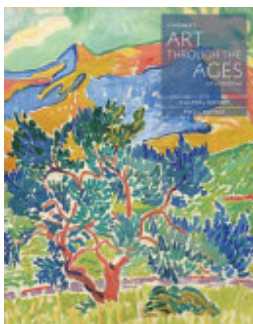
You can make an in-person or virtual appointment with me using this link:

### [Make an appointment with Jessie](#)

Appointments are recommended, so I can ensure dedicated time to answer your questions, however you are welcome to stop by my office (Morristown campus, Humanities Building 148A) during any of my in-person office hours. In the case that I am in another meeting, we will schedule another time to chat.

	Monday	Tuesday	Wednesday	Thursday
Virtual Hours Only	11:00am - 3:00pm			
In Person (or virtual)		9:00 am - 11:00 am	9:00am - 2:30pm	9:00 am - 11:00 am

## Required Textbook(s) and Materials



### **Gardner's Art through the Ages: A Global History**

**ISBN:** 9781285754994

**Authors:** Fred S. Kleiner

**Publisher:** Cengage Learning

**Publication Date:** 2015-01-01

#### **Additional Information**

The textbook is required for the course. Through your DEI fee, you are automatically provided the textbook as an ebook. Refer to the instructions on eLearn in the Getting Started module to access your ebook. You have until September 8th to opt out of this option, but if you choose to do so, you must find alternative access to the text.

### **Digital Camera**

#### **Additional Information**

The one on your phone is sufficient.

### **Access to Microsoft Word**

#### **Additional Information**

- All students have access to the entire Microsoft Office suite. Follow the instructions [here](#) to install.

## Student Learning Outcomes/Objectives

- To employ correct terminology when referencing a work of art from a historical period.

- To demonstrate a chronological awareness of art history from the medieval period to the present in the Western world.
- To identify stylistic traits associated with provenance, era, and attribution.
- To identify key works of art, artists, and styles associated with the Western world.
- To examine the influence of historical events, cultures, and people on an individual artist's style, or original thought or design produced by an artist.
- To describe the constructs used universally by artists regardless of place and time.
- To demonstrate cognitive skills relative to understanding major art works displayed in museums and galleries.
- To examine the influence that visual art has had on individuals from the medieval period to the present day.
- To examine the influence of visual art on other areas of academia, such as history, literature, math, and archaeology.

## Instructional Approach and Methods

This class is designed to give you several opportunities to reflect on the material presented, and to demonstrate your understanding of the material. While this means there are more assignments to complete, it also means that no single assignment can "make or break" your grade. Your final grade will be a culmination of the various assignments, which are also designed for you to present your knowledge in a variety of ways and formats.

### **VISUAL ACUITY**

As a course about art - there is a lot of looking in this class. Looking carefully at the images presented will be as important as reading the text and watching the posted videos. A large portion of the exams will also be identification of images. For these reasons, I highly recommend engaging with this course on a tablet or computer, rather than through your phone. Larger images will be easier to view and identify. Additionally,

if you have a visual impairment which prohibits you from viewing the imagery for this class clearly, please contact me immediately to determine the best course of action for you to succeed.

## Assessment, Evaluation and Testing Procedures

### **GRADED ASSIGNMENTS**

#### **Attendance:**

**Our class meets on Tuesdays and Thursdays, from 11:10am - 12:35pm, in HUM 136.**

Class meetings will include review of course readings and videos, study guides, discussion sessions, small group reviews, and work time. Attendance is required. You will receive a daily participation grade, worth 10 points each. Your lowest 4 grades are dropped.

#### **Chapter Quizzes**

Each chapter has a quiz based on the content presented in the textbook and the posted videos. Quizzes may be taken multiple times to improve your score. There are due dates designed to help keep you on track, but quizzes for each unit may be retaken through the end of each unit.

#### **Discussions:**

We will have 5 graded discussion sessions throughout the semester, in which you may be required to prepare material in advance, and share with the class during our class meetings. These are not formal presentations, but you will be expected to participate and add to the discussion. The lowest discussion grade is dropped.

#### **Unit Exams:**

The course is divided into three units. Unit exams cover all material from the unit, are timed, and cannot be repeated. Make sure you have a strong internet connection, and adequate time to complete the exam before you start it.

#### **Unit Projects:**

Each unit also includes a paper, presentation, or other project which requires you to apply your understanding of the material from the unit, along with outside research. Unit Projects include choosing your topic and creating your outline and list of sources, and using given work time in class to revise and improve your final project. Unit Projects can be turned in up to 3 days late, with a 20% reduction in grade.

## EVALUATION GUIDELINES

Every effort is made by the instructor to grade work quickly, and provide relevant feedback. Much of your feedback will be given in verbal feedback during class discussions and individual meetings.

Rubrics are used for most assignments, so you can see clearly in which area you could improve in future assignments. Additional written feedback is given when appropriate.

After the exam due date you will have the opportunity to review your exam to determine which questions were missed.

If you ever have questions about your score on a given assignment, please email the instructor or schedule an office appointment.

## Grading Scale

A	(90% – 100%) Exemplary performance: enthusiastic participation in discussions, demonstration of a comprehensive understanding of the subject, organized and insightful presentation and/or writing.
B	(80% – 89%) Very good performance: very good participation in discussions, demonstration of a comprehensive understanding of the subject, organized and thoughtful presentation and/or writing.
C	(70% – 79%) Good performance: good participation in discussions, demonstration of understanding of the subject, thoughtful presentation and/or writing.
D	(60% – 69%) Below average performance: some participation in discussions, some

	demonstration of understanding of the subject, brief or unorganized presentation and/or writing.
F	(<59%) Poor performance: little or no participation in discussions, little demonstration of understanding of the subject, brief and unorganized presentation and/or writing.

## Assignments

# How Your Success is Measured

This class is designed with a variety of types of assignments spread throughout the semester. Some assignments are shorter, "hands on", and experiential, while others require more prolonged thought and reflection. There are also assignments designed to test and apply your understanding of the vocabulary and concepts.

## DAILY JOURNAL AND PARTICIPATION

**25% of your final grade:** Each class period will include opportunities for reflection, revision, small group work, reviewing material, and asking questions. Attendance and active participation are expected.

**Our class meets on Tuesdays and Thursdays, from 11:10am - 12:35pm, in HUM 136.**

Class meetings will include review of course readings and videos, study guides, discussion sessions, small group reviews, and work time. Attendance is required. You will receive a daily participation grade, worth 10 points each. Your lowest 4 grades are dropped.

## QUIZZES

**15% of your final grade:** There are 12 quizzes covering material from the both the textbook, online resources, and in class lectures. Quizzes are a mixture of multiple choice and matching questions, testing your understanding of the chapter vocabulary and terms. The lowest two quiz grade will be dropped. Quizzes may be repeated for an improved grade throughout the unit.

## UNIT EXAMS

**18% of your final grade:** The course is divided into three units. Unit exams are each worth 60 points, cover all material from the unit, are timed, and cannot be repeated. Make sure you have a strong internet connection, and adequate time to complete the exam before you start it.

## **DISCUSSION SESSIONS**

**12% of your final grade:** There are 5 discussion sessions during our class meetings, which offer a chance to demonstrate your understanding of the chapter terms, reflect on broader topics related to artwork and art making, and to engage with and learn from your peers. You will implement terms and themes from the chapter material and begin to analyze artistic intent, and historical context through discussion. Discussion sessions may not be made up. Discussion prompts will be given in advance of class. You are expected to prepare and be ready to speak to the topic in class. These are not formal presentations, but you are expected to be ready to participate and add to the discussion. Each discussion session is worth 30 points. The lowest discussion grade is dropped.

## **UNIT PROJECTS**

**30% of your final grade:** Each unit also includes a paper, presentation, or other project which requires you to apply your understanding of the material from the unit, along with outside research. Unit Projects include choosing your topic and creating your outline and list of sources, and using given work time in class to revise and improve your final project. Unit Projects can be turned in up to 3 days late, with a 20% reduction in grade. Each unit project is worth 100 points. Portions of the preparatory work may not be made up. Details regarding deadlines, and distribution of points will be given with the project prompt.

# Class Participation

## **ATTENDANCE AND PARTICIPATION**

Daily journals and participation are part of your grade in this class. Generally, arriving on time, having a positive and curious attitude, and showing willingness to engage with the course material will earn you full points.

## **ATTITUDE**

This class also celebrates people from all walks of life: for their employment histories, accolades or missteps, sizes, skin tones, genders, and ages. Your background, experience, and culture is viewed as an asset to our class as we seek to learn more about people and cultures around the globe and throughout history. Through art we will consider how to live in the world in a more authentic, giving,

and informed way. All perspectives are welcome here - and all students are expected to enter the classroom with an attitude of mutual respect and kindness. I am happy to be addressed as either Jessie or Ms. Van der Laan; my gender pronouns are she/her/hers. I was provided with a class roster with your name as it appears in the Banner system. However, if you prefer to be called a different name than what is on the roster, please let me know. As I cannot change your name in the eLearn system, please include your preferred name in any assignment or communication, to ensure your peers and I may address you correctly.

We will be viewing a large variety of works. You are not expected to like everything to which you are exposed, but you are expected to consider and be respectful of these works. Some images are potentially provocative and/or offensive. I expect you to view all images with sensitivity and an open mind, in order to understand and evaluate both formal and conceptual qualities. One of the greatest gifts of art is a window into the mind of others, and a chance to spark discussion. Be open to new viewpoints, backgrounds, and motivations as you move through this course.

## Course and Class Policies/Procedures

### GENERAL LATE POLICIES

In general, every effort should be made to turn in work on time. However, I would always rather you engage in the assigned work, and it be a bit late than not do it at all. The following assignments may be turned in late, with the given provisions:

**Daily attendance:** Your lowest 4 attendance grades are dropped. There is no difference between an "excused" or "un-excused" absence, meaning you do not have to justify your absence to me. However, you should plan for these absences - particularly if you will miss for sports, clubs, or other priorities. While you are not expected to explain your absence - I do care about you and want to see you in class. If you will miss class for illness, a work obligation, family need, or any reason you see fit, please communicate with me - in advance if possible. I can work with you more to stay on track if you let me know what's going on.

**Quizzes:** Quizzes may be repeated for an improved grade throughout the unit.

**Exams:** Exams cannot be made up or turned in late. Make sure you have a strong internet connection, and adequate time to complete the exam before you start it.

**In Class Discussions:** Discussion sessions may not be made up. Discussion prompts will be given in advance of class. You may earn partial credit for discussion preparation. The lowest discussion grade is dropped.

**Unit Projects:** Portions of the preparatory work may not be made up. Details regarding deadlines, and distribution of points will be given with the project prompt.



## **EXTENUATING CIRCUMSTANCES**

If something prohibits you from completing your work on time, please let me know, and I will make my best attempt to work with you. Such cases may be: illness/hospitalization of yourself, or a person for whom you are the primary caregiver, death of a close relative or friend, pregnancy complications or labor and delivery, loss of care support for a person for whom you are the primary caregiver, or other unexpected life circumstances. Whenever possible, please communicate these events as soon as possible and before missed deadlines to make plans to move forward in the class successfully. Missing more than two weeks of work will severely impact your ability to succeed in the course, regardless of any given extensions.

## **TECHNICAL ISSUES**

Technical problems should be reported to the instructor and well documented with a screen shot attached. Extensions based on technical problems will be given rarely, on a case-by-case basis.

Waiting until the last minute, or poor internet connections are not legitimate reasons for extensions.

## **USE OF AI (ARTIFICIAL INTELLIGENCE)**

The primary goals of this course are to build your observational, analytic, and critical thinking skills. Many assignments require you to include personal reflection, comparison to current events, or creative thinking as a component of the evaluation criteria. While AI has practical applications, it cannot replicate your unique thoughts, experiences, or point of view, which is paramount to your development in this course. AI will not be permitted in this course on any assignment, including quizzes, exams, discussions, unit projects. Any assignment that is found to have been plagiarized or to have used unauthorized AI tools may receive a zero and/or be reported for academic misconduct. Unauthorized AI tools includes any artificial intelligence-based technologies such as ChatGPT, Google's Bard, or any other pre-trained language model (commonly referred to as a "chatbot"), or paraphrasing technology ("Spinbots"). The instructor will contact the student regarding any suspected use of AI before assigning a grade. The student will have the right and responsibility to demonstrate the originality of their work through an individual conference with the instructor.

The instructor may use the following to investigate suspected use of AI, along with their own professional judgment:

- a. Turnitin Software for plagiarism and AI writing detection.
- b. at least 3 web-based AI detection tools
- c. inconsistencies in vocabulary or syntax
- d. inconsistencies with sources or citation

The instructor will contact the student regarding any suspected use of AI before assigning a grade. The student will have the right and responsibility to demonstrate the originality of their work through an individual conference with the instructor. It is the student's responsibility to save and document any sources, research, drafts, or preliminary activities associated with each assignment. Based on the individual conference, the instructor will determine a course of action, and grade assigned.

## Academic Honesty

Faculty expect all students to refrain from acts of academic misconduct including but not limited to:

1. Plagiarism - refers to using another person's ideas or writing without giving proper credit to the original source. Indulging in this type of conduct will subject the student to disciplinary sanctions, which may be imposed through the regular institutional procedures of Walters State Community College as outlined in the Student Handbook. Plagiarism will result in a grade of "0" for the paper/exam/presentation. Student Conduct and Disciplinary Sanctions contained in the college Catalog/Student Handbook apply (see policy 04:18:02 Disciplinary Sanctions).

Plagiarism includes, but is not limited to the following:

- a. Using cut/paste tool from original document with no references given.
  - b. Copying another student's work and submitting it as one's own.
  - c. Forging or otherwise altering signatures.
  - d. Giving or falsifying academic documents or materials.
2. Cheating - construed as attempting to deceive or mislead which includes, but is not limited to the following:
    - a. Utilizing old tests, projects, notes or written papers.
    - b. Providing unauthorized information to a fellow student about exam content.
    - c. Receiving unauthorized aid from any source with quizzes, examinations, or other assignments.
    - d. Seeking information in an unacceptable manner during/preceding an exam or other assigned work (cheat sheet, verbal exchange, looking at another person's paper or electronic device, utilizing headphones, using textbook when the test/quiz is not an open book test/quiz, using textbook test bank etc.).
    - e. Consulting with a classmate or others when taking a computerized test.
    - f. Disregarding other specific policies and procedures outlined for a particular class.
    - g. Utilizing unapproved technology/electronic equipment during testing (i.e.: mobile devices such as cell phones, smart devices, or tablets, etc.).
    - h. Using the same Internet Protocol network address (IP address) as another student for testing without approval from the course faculty.

3. The use of any generative artificial intelligence (AI) tool, such as OpenAI's ChatGPT, Google's Bard, or any other pre-trained language model (commonly referred to as "chatbot"), must be cited for any assignment where it has been used and may not be used unless specifically allowed by your instructor. Please see your instructor or the course policies within the syllabus if you have questions.

## Meeting Basic Needs and Getting Emotional Support

### **BASIC NEEDS**

Any student who has difficulty affording groceries or accessing sufficient food to eat every day, or who lacks a safe and stable place to live is urged to contact Student Services. If you feel comfortable bringing these needs to my attention, I will also help direct you to the appropriate services on campus.

You can also contact Sherry Watson (423-585-2691) [sherry.watson@ws.edu](mailto:sherry.watson@ws.edu) or Tammy Holt (423-585-6864) [tammy.holt@ws.edu](mailto:tammy.holt@ws.edu) directly who can help you apply for and receive emergency funds.

### **COUNSELING SERVICES**

Counseling Services are also available to all Walters State students. If you could use someone to talk to, or someone who may be able to better address any of your personal or academic concerns, use the following link to schedule an appointment with one of the counselors.

<https://ws.edu/student-services/counseling-testing/>

### **CRISIS**

If you are in crisis, please call one of the following services.

<https://www.tn.gov/behavioral-health/need-help.html>

## Student Resources

### **TUTORING SERVICES**

Students in need of tutoring assistance are encouraged to contact the Office of Student Tutoring located as follows:

- Morristown Campus - Student Services Building Room L107 - (423) 585-6920

- Niswonger Campus - GRNV 226 - (423) 798-7982
- Sevierville Campus - MMH Room 210 - (865) 286-2787
- Claiborne Campus - Room 123A - (423) 851-4761

Specific tutoring assistance in mathematics and writing is available in-person and online as follows:

- Morristown Campus - English Learning Lab - HUM 120 - (423) 585-6970

[Walters State English Learning Lab \(opens in new window\)](https://www.waltersstate.edu/academics/humanities/writing-lab)  
[ws.edu/academics/humanities/writing-lab](https://www.waltersstate.edu/academics/humanities/writing-lab)

- Morristown Campus - Mathematics Lab - MBSS 222 - (423) 585-6872

[Walters State Mathematics Learning Lab \(opens in new window\)](https://www.waltersstate.edu/academics/mathematics/learning-lab)  
[ws.edu/academics/mathematics/learning-lab](https://www.waltersstate.edu/academics/mathematics/learning-lab)

## **TECHNOLOGY SUPPORT**

Students who need assistance with computing and technology issues should contact the IET Helpdesk by phone at Morristown: (423) 318-2742; Niswonger: (423) 798-8186; or Sevierville: (865) 286-2789 or on-line access.

[Walters State Helpdesk \(opens in new window\)](https://www.waltersstate.edu/helpdesk)  
[helpdesk.ws.edu](https://www.waltersstate.edu/helpdesk)

## **STUDENTS WITH DISABILITIES SUPPORT SERVICES**

Students with disabilities must register with Student Support Services each semester in the Student Services Building, Room U134 (phone (423) 585-6892) if they need any special facilities, services, or consideration.

[Walters State Student Support Services \(opens in new window\)](https://www.waltersstate.edu/student-services/disability/)  
[ws.edu/student-services/disability/](https://www.waltersstate.edu/student-services/disability/)

## **SUICIDE PREVENTION STATEMENT**

Walters State is committed to and cares about all students. Support services are available for any person at Walters State who is experiencing feelings of being overwhelmed, hopelessness, depression, thinking about dying by suicide, or is otherwise in need of assistance. For immediate help, contact the National Suicide Prevention Lifeline by calling or texting 9-8-8 or the Trevor Lifeline at 1-866-488-7386. Veterans may also contact the Veterans Crisis Line at 1-800-273-8255 (press 1) or Text 838255.

Walters State has a relationship in place with the following community agencies to provide services (may include crisis referral services, prevention screenings, etc.):

- Cherokee Health Systems 423-586-5032
- Frontier Health 423-467-3600

## College Policies

### **STUDENTS HANDBOOK AS OFFICIAL GOVERNING DOCUMENT**

This class is governed by the policies and procedures stated in the current Walters State Community College Student Handbook. All students attending Walters State Community College, regardless of the time, location, or format of the class, must abide by the rules and regulations outlined in the current Walters State Catalog/Student Handbook and the current Walters State Timetable of Classes.

[Walters State Catalog \(opens in new window\)](https://catalog.ws.edu/)  
[catalog.ws.edu/](https://catalog.ws.edu/)

[Walters State Timetable of Classes \(opens in new window\)](https://ws.edu/admissions/registration/)  
[ws.edu/admissions/registration/](https://ws.edu/admissions/registration/)

### **PURPOSE, LIMITATIONS AND MODIFICATION OF SYLLABUS**

This syllabus sets forth the expectations for the course content, work, and grading as well as expectations for student performance and conduct. The syllabus does not constitute a contract between the student and the instructor or the College. The information contained here is subject to change at any time. The instructor reserves the right to modify this syllabus at any time with written notification to the students. Though changes are possible, it is expected that the course will be conducted as described in this syllabus for the semester/year specified in the Course Information section of the syllabus. This syllabus is only valid for the semester/year specified and course requirements are not guaranteed for future semesters.

### **COURSE GROUND RULES**

- Students must attend the first day of on-ground class or contact the instructor prior to the first class. Failure to do this may result in being dropped from the class. Excessive absences may substantially lower the course grade.
- Regular class attendance is a student's obligation for any course regardless of format. (See the Walters State Catalog/Student Handbook). If a student misses class, it is his or her responsibility to contact the instructor regarding missed assignments and/or activities and to be prepared for the next class assignment.
- Students enrolled in web courses must follow the course attendance policy defined for online attendance during the first week of class and throughout the term. Failure to do this may result

in being dropped from the class during week one OR may result in the accrual of absences which may negatively impact the student's grade in the course.

- Students who have not paid fees on time and/or are not correctly registered for this class and whose names do not appear on official class rolls generated by the Walters State student information system (MyWS) will not be allowed to remain in class or receive credit for this course.
- Electronic devices must not disrupt the instructional process or college-sponsored academic activity. Use of electronic devices is prohibited unless use of the device is relevant to the activity and use is sanctioned by the faculty member in charge. Electronic devices that are not relevant to the activity or sanctioned by the faculty member in charge should be set so that they will not produce an audible sound during classroom instruction or other college-sponsored academic activity.

## **FINANCIAL AID**

Students receiving any type of financial aid or scholarship should contact the Financial Aid Office before making any changes to their schedule. Schedule changes without prior approval may result in loss of award for the current term and future terms.

All forms of student Financial Aid may be jeopardized or lost due to the lack of Satisfactory Academic Progress in one or multiple courses. Lack of Satisfactory Academic Progress may negatively impact a student's degree/certificate completion pace and further jeopardize Financial Aid eligibility.

## **CANCELLATION OF CLASSES AND ACADEMIC CONTINUITY**

For information related to the cancellation of classes due to inclement weather or other events, please check the Senators Emergency Text system or the college's Web site at:

[Walters State Homepage \(opens in new window\)](#)

[ws.edu/home/](http://ws.edu/home/)

[Walters State Facebook page \(opens in new window\)](#)

<https://www.facebook.com/WaltersState/>

[Walters State Twitter page \(opens in new window\)](#)

<https://twitter.com/waltersstate>

or call the college's student information line, 1-800-225-4770, option 1; the Sevier County Campus, (865) 774-5800, option 7; the Niswonger Campus (423) 798-7940, option 7; or the Claiborne County Campus, 423-636-6200, option 7. Also, please monitor local TV and radio stations for further announcements.

When an event or disaster interrupts the scheduled operations of the college and the ability to proceed with the academic course activities as planned, the college and your instructor may alter the course plan outlined in the syllabus. Should an event occur, students should refer to their course e-Learn pages and/or class materials previously delivered to receive guidance from their instructor. Students should continue to monitor the official college channels of communication listed in the above paragraph. If you would like to sign up for the Senators Emergency Text system, please go to the following Web site:

[Senator Emergency Text System \(opens in new window\)](https://ws.edu/set/)  
[ws.edu/set/](https://ws.edu/set/)

Dual Enrollment students attending on a high school campus should refer to the high school inclement weather cancellations.

## **LEARNING MANAGEMENT SYSTEM**

Brightspace (commonly known as eLearn or D2L) is the college's Learning Management System (LMS).

Brightspace is committed to accessibility by "deliver[ing] a learning experience that meets the needs of all people, regardless of age or ability." [Brightspace Accessibility Standard \(opens in new window\)](#)

Brightspace is also committed to guarding student data and privacy. [Brightspace Privacy Policy \(opens in new window\)](#)